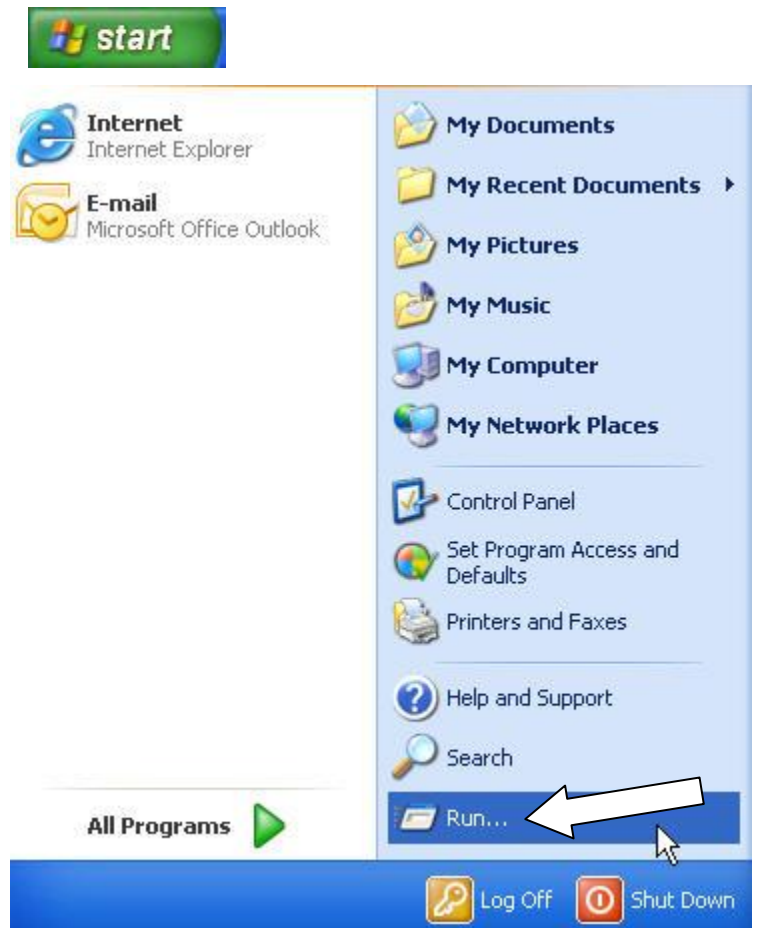


Printing from a Wireless Laptop

You must be logged into the wireless network in order to print. If you check out a UHD Laptop, instructions are provided with the laptop. If you are logging into the wireless network with your own laptop, launch Internet Explorer and enter your username and password in the wireless connection screen that will be displayed.

Then follow these instructions for printing.

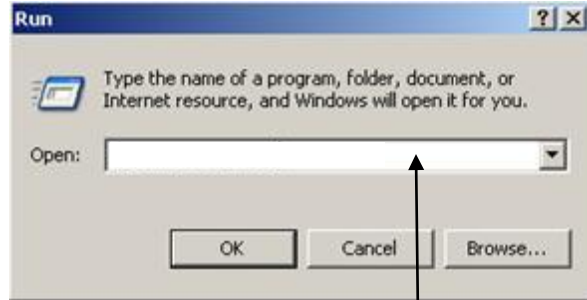
1. Send your document or information to the printer (File>Print).
2. Click on the start button.
3. Choose run from the start menu.



Printing from a Wireless Laptop

- The run dialogue box will open. In the "Open" field, type in the name of the printer you want to print to.

Click OK after you enter the printer name.



Enter printer name here

One Main Building (S800 Lab)

\\prometheus\Wlab3

\\prometheus\Wacolor

Commerce Street Building (C300)

\\prometheus\cometdell1

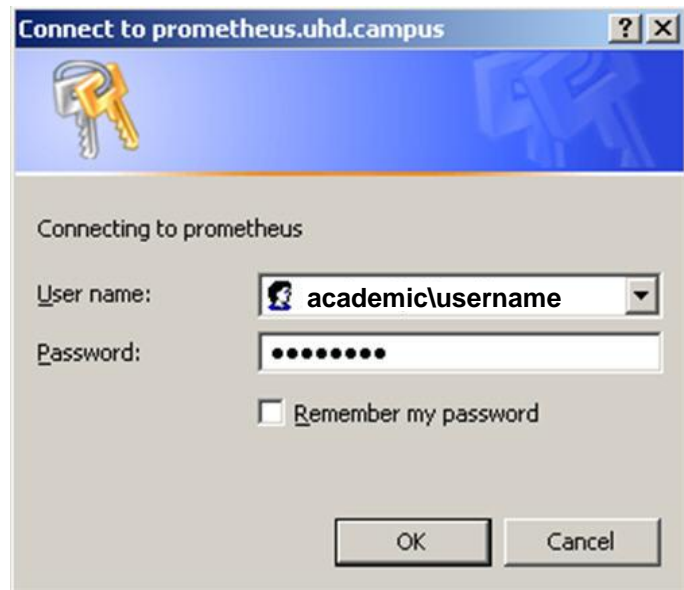
\\prometheus\cometdellcolor

Shea Street Building (B200)

\\prometheus\commons1

\\prometheus\commons2

- The printer connection dialogue box will open. Enter academic\username (substitute your user name) in the username field and your password in the password field. Then click OK. Note that you only need to connect to the printer one time during each wireless session.

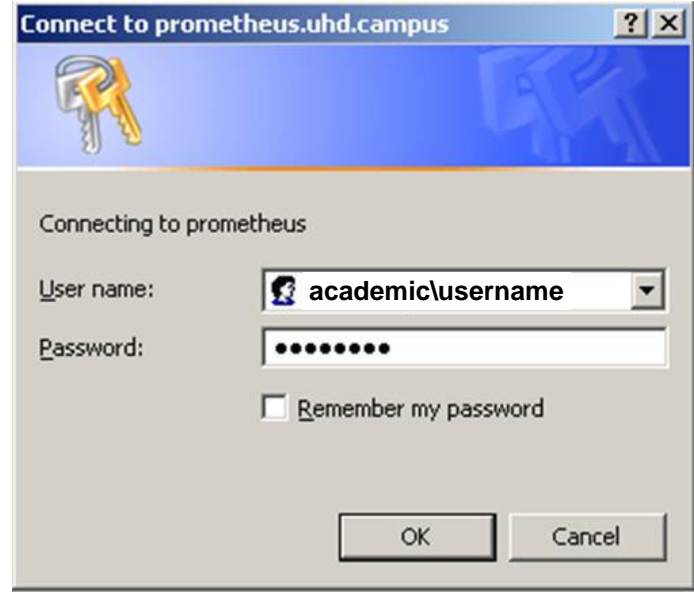


- Click on the UHD Pay Per Print System icon on the laptop screen.

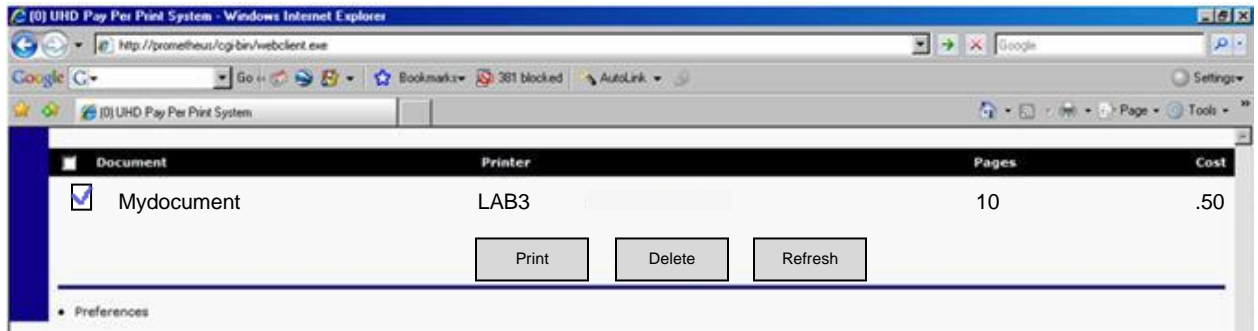


Printing from a Wireless Laptop

- The printer connection dialogue box will open again. Enter academic\username (substitute your user name) in the username field and your password in the password field. Then click OK. Note that each time you send a document to the printer you will need to enter your username and password in this dialogue box.



- You will automatically be taken to the following Pay Per Print page. Click in the box next to the name of your print job, and then click the **Print** button at the bottom of the window.



Click the **Refresh** button to update the window with the most current list of documents waiting to be printed. Click the **Delete** button to delete the print job.